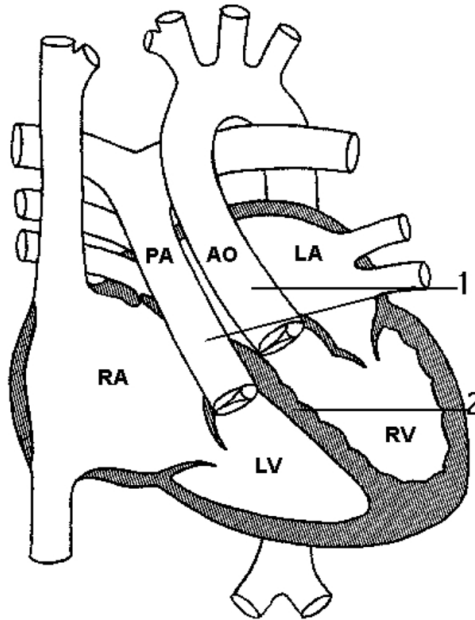


Congenitally Corrected Transposition



Legend:

1. Congenitally corrected TGA (AV & VA discordance)
2. Intact ventricular septum
3. No associated lesions (thus, the term "isolated")

D. Mayer and C. Mullins, *Congenital Heart Disease, A Diagrammatic Atlas*. New York: Alan R. Liss, Inc, 1988, p. 5.

This material is used by permission of Wiley-Liss, a subsidiary of John Wiley & Sons, Inc.