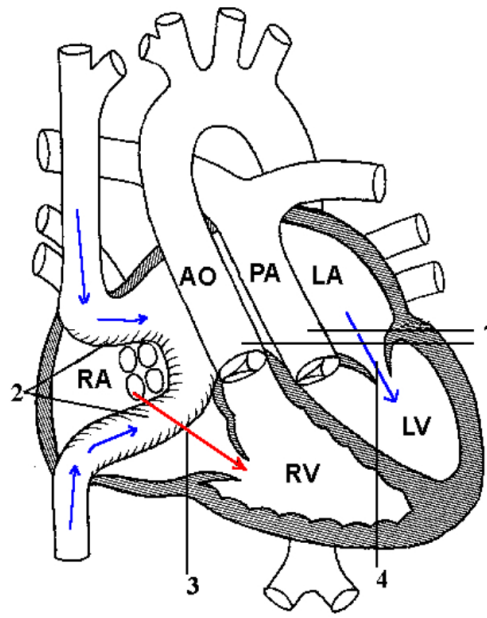


## Complete Transposition - Mustard



**Legend:**

1. Transposition of the great arteries
2. Atrial baffles
3. Pulmonary vein flow through tricuspid valve to right ventricle
4. IVC and SVC flow through mitral valve to left ventricle

D. Mayer and C. Mullins, *Congenital Heart Disease, A Diagrammatic Atlas*. New York: Alan R. Liss, Inc, 1988. p. 5.

This material is used by permission of Wiley-Liss, a subsidiary of John Wiley & Sons, Inc.